

Toad[®] for SQL Server 6.1

Installation Guide

© 2013 Quest Software, Inc.

ALL RIGHTS RESERVED.

This guide contains proprietary information protected by copyright. The software described in this guide is furnished under a software license or nondisclosure agreement. This software may be used or copied only in accordance with the terms of the applicable agreement. No part of this guide may be reproduced or transmitted in any form or by any means, electronic or mechanical, including photocopying and recording for any purpose other than the purchaser's personal use without the written permission of Quest Software, Inc.

The information in this document is provided in connection with Quest products. No license, express or implied, by estoppel or otherwise, to any intellectual property right is granted by this document or in connection with the sale of Quest products. EXCEPT AS SET FORTH IN QUEST'S TERMS AND CONDITIONS AS SPECIFIED IN THE LICENSE AGREEMENT FOR THIS PRODUCT, QUEST ASSUMES NO LIABILITY WHATSOEVER AND DISCLAIMS ANY EXPRESS, IMPLIED OR STATUTORY WARRANTY RELATING TO ITS PRODUCTS INCLUDING, BUT NOT LIMITED TO, THE IMPLIED WARRANTY OF MERCHANTABILITY, FITNESS FOR A PARTICULAR PURPOSE, OR NON-INFRINGEMENT. IN NO EVENT SHALL QUEST BE LIABLE FOR ANY DIRECT, INDIRECT, CONSEQUENTIAL, PUNITIVE, SPECIAL OR INCIDENTAL DAMAGES (INCLUDING, WITHOUT LIMITATION, DAMAGES FOR LOSS OF PROFITS, BUSINESS INTERRUPTION OR LOSS OF INFORMATION) ARISING OUT OF THE USE OR INABILITY TO USE THIS DOCUMENT, EVEN IF QUEST HAS BEEN ADVISED OF THE POSSIBILITY OF SUCH DAMAGES. Quest makes no representations or warranties with respect to the accuracy or completeness of the contents of this document and reserves the right to make changes to specifications and product descriptions at any time without notice. Quest does not make any commitment to update the information contained in this document.

If you have any questions regarding your potential use of this material, contact:

Quest Software World Headquarters
LEGAL Dept
5 Polaris Way
Aliso Viejo, CA 92656
email: legal@quest.com

Refer to our Web site (www.quest.com) for regional and international office information.

Trademarks

Quest, Quest Software, the Quest Software logo, LiteSpeed, Simplicity at Work, Toad, TOAD, T.O.A.D., and TOAD WORLD are trademarks and registered trademarks of Quest Software, Inc. For a complete list of Quest Software's trademarks, see <http://www.quest.com/legal/trademark-information.aspx>. Other trademarks and registered trademarks used in this guide are property of their respective owners.

Toad for SQL Server 6.1
Installation Guide
September 26, 2013

Table of Contents

Installation	6
System Requirements	6
Client Requirements	6
Server Requirements	7
Virtualization Support	8
User Requirements	8
Install Toad	9
Specify Application Data Directory Location	9
Install Toad Silently	10
Determine Which Installer to Use	10
Silent Installation Prerequisites	11
Silent Installation Using the Executable	11
Silent Installation Using the Microsoft Installer	13
Install Toad on Citrix Systems	18
Upgrade Toad	19
Upgrade Automation Scripts and Scheduled Tasks	19
Upgrade Automation Scripts	20
Upgrade Scheduled Scripts	20
Files Migrated During Upgrades	22
Integration between Toad and Microsoft SQL Server Management Studio	24
Install and Uninstall Toad plug-in	24
Uninstall Toad	25
Register Toad	25
Notes for Toad for SQL Server Users	26
Create and Troubleshoot Connections	27
Understand Toad Connections	27

Share Database Connections	27
Create SQL Server and SQL Azure Connections	28
Troubleshoot SQL Server Issues	30
Installation Issues	30
Toad Plug-in for Microsoft SQL Server Management Studio Issues	30
Connection Issues	31
Configure Version Control	34
About Version Control	34
Prerequisites	34
Configure Version Control	35
Manage Objects under Version Control	37
Troubleshoot Version Control	41
Troubleshoot Upgrades	41
Troubleshoot Other Issues	41
Configure SQL Server Debugging	43
Configure SQL Server Debugging	43
Debugging Prerequisites	43
Configure Debugging for SQL Server 2012	46
Configure Debugging for SQL Server 2008	46
Configure Debugging for SQL Server 2005	47
Configure Debugging for SQL Server 2000	48
Set Up Debugging	49
Appendix: Contact Quest	51
Contact Quest Support	51
Toad Community	51
Contact Quest Software	51
About Quest Software	51

Index	53
--------------------	-----------

Installation

System Requirements

Client Requirements

Before installing Toad, ensure that your client system meets the following minimum hardware and software requirements:

Platform	600 MHz minimum, 1 GHz recommended
Memory	512 MB of RAM minimum, 1 GB recommended Note: The memory required may vary based on the following: <ul style="list-style-type: none"> • Applications that are running on your system when using Toad • Size and complexity of the database • Amount of database activity • Number of concurrent users accessing the database
Hard Disk Space	104 MB to run Toad Note: The disk space required may vary based on the edition of Toad selected for installation.
Operating System	Windows Server 2003 Windows XP Professional (32-bit or 64-bit) Windows Vista (32-bit or 64-bit) Windows Server 2008 (32-bit or 64-bit) Windows Server 2008 R2 (64-bit) Windows 7 (32-bit or 64-bit) Windows 8 (32-bit and 64-bit) Important: Toad uses the Microsoft Distributed Transaction Coordinator (DTC) when opening a SQL file to get Full-Text Search status, but DTC is disabled by default on Windows Vista, Windows Server 2008 and Windows 7. If you are using either operating system, ensure that Network DTC access is enabled on the Toad client. See http://technet.microsoft.com/en-us/library/cc753510(WS.10).aspx for more information about enabling DTC access.
.NET Framework	Microsoft .NET Framework 4.0 Note: The .NET Framework Client Profile is not supported.

Additional Requirements	<p>Web Browser Microsoft Internet Explorer 6.0 or later</p> <p>Copy/Move Database Wizard The SQL Server Backward Compatibility package is required to use the Copy/Move Database wizard.</p> <p>Log Reader The Log Reader requires version 8.0 DLL files in the Microsoft Visual C++ 2005 SP1 Redistributable Package. If these files do not exist on the client, you will need to install them to use some functionality in the Log Reader.</p> <p>http://www-microsoft.com/downloads/details.aspx?FamilyID=200B2FD9-AE1A-4A14-984D-389C36F85647&displaylang=en</p>
--------------------------------	--

Server Requirements

Before installing Toad, ensure that your server meets the following minimum hardware and software requirements:

Database Server	<p>Limited support of SQL Server 2000 (Service Pack 3 or later)</p> <p>Note: The following features are not available:</p> <ul style="list-style-type: none">• Index Defragmentation• Storage Management• Performance Monitor• Project Lucy Performance Analytics• Altering procedures, functions, views in the Editor• Version Control <p>SQL Server 2005 (Service Pack 2 or later) and SQL Server 2005 Express</p> <p>SQL Server 2008 and SQL Server 2008 Express</p> <p>SQL Server 2008 R2 and SQL Server 2008 R2 Express</p> <p>SQL Server 2012 and SQL Server 2012 Express</p> <p>Notes:</p> <ul style="list-style-type: none">• SQL Server Compact Edition is not supported.• Storage Management is not available on SQL Server Express.
Cloud Database Service	<p>SQL Azure</p> <p>Note: To be able to utilize a majority of Toad functionality, please grant VIEW DEFINITION on the SQL Azure databases you want to work with.</p>

Virtualization Support

Application Virtualization	Limited testing has been performed for Citrix XenApp 5.0 on Windows Server 2003 and Citrix XenApp 6.5 on Windows Server 2008 R2. Limited testing has been performed for Citrix support on Windows Server 2003 Enterprise Server (Service Pack 2) using the MetaFrame Presentation Server 5.0 and Citrix Presentation Server Clients 10.2. See "Install Toad on Citrix Systems" (page 18) for more information.
Desktop Virtualization (VDI)	Toad has been tested with Quest vWorkspace 7.6 running on Windows Server 2008 R2 64-bit.
Note: Toad may work in virtualization environments other than the ones in which it was tested.	

User Requirements

User Requirements to Install Toad

Only Windows Administrators and Power Users can install Toad.

If an Administrator installs Toad, the Administrator can share the Toad shortcut icon on the desktop and menu items with any user—a Power User, Restricted User, Vista standard user—on the computer.

If a Power User installs Toad, a Restricted User cannot do the following:

- Associate file extensions.
- View the Toad shortcut icon on the desktop or the Toad menu options in the Windows Start menu. As a workaround, Restricted Users can create a shortcut to Toad from the install directory and place the shortcut on their desktop.

User Requirements and Restrictions for Running Toad

The following describes the requirements and restrictions for users who launch and run Toad:

- To create or modify the QuestSoftware.ToadSecurity table to enable Toad Security, the user who maintains this table must have privileges to create, insert, update, and delete it. All other users need only the ability to read the QuestSoftware.ToadSecurity table to use Toad Security features.

Install Toad

Note: Your Toad for SQL Server license key determines the edition and will enable Toad for SQL Server functionality accordingly. In many cases, if functionality is disabled within Toad for SQL Server, you may not have an appropriate license to use it. When Toad is running, you can see which components are licensed by selecting **Help | About**.

To install Toad

1. Run the Installer.
2. Accept the License Agreement.
3. Select the products you want to install and click **Install**.

Caution! When installing Toad using Quest Installer on Windows 7 64-bit, Program Compatibility Assistant may appear with “This program might not have installed correctly” message. Select **This program installed correctly** to continue installation.

Specify Application Data Directory Location

Toad for SQL Server 6.1 stores settings files in the user's Application Data directory. The default location cannot be modified from within the application. Toad provides two methods to change the default location: by using a Registry setting or by using a command switch in a Toad shortcut.

Use the Registry setting method to change the application data directory from Roaming to Local. Use the command switch method to change the location to any new path.

To change Toad Application Data directory location from Roaming to Local

In the Registry under Toad for SQL Server (Computer\HKEY_CURRENT_USER\Software\Quest Software\Toad for SQL Server\6.1), add LOCALSETTINGS with a value of *1*.

See the following table for default (Roaming) and resulting (Local) directory path.

Caution: All current Toad settings will be lost after applying this Registry setting unless you manually copy the settings files from the default location (Roaming directory) to the new location (Local directory). Copy the settings files **BEFORE** you add the Registry setting and **BEFORE** opening Toad.

Operating System	Default Location	New Location when LOCALSETTINGS = 1
Windows XP Windows Server 2003	C:\Documents and Settings\username\ Application Data\Quest Software\Toad for SQL Server 6.1	C:\Documents and Settings\username\ Local settings\Application Data\Quest Software\Toad for SQL Server 6.1
Windows Vista Windows Server 2008 Windows 7 Windows 8	C:\Users\username\ AppData\Roaming\Quest Software\Toad for SQL Server 6.1	C:\Users\username\ AppData\Local\Quest Software\ Toad for SQL Server 6.1

To change Toad Application Data directory location using a command-line switch

You can override the default Application Data directory by running Toad with the command switch:

```
Toad.exe --datadir="YourNewDirPath"
```

To instruct Toad to always use the new directory path, add the command switch and the new directory path to a Toad desktop shortcut. Then use the desktop shortcut when opening Toad.

1. To add the command switch, right-click the Toad shortcut and select Properties.
2. Enter the command switch and add the directory path in quotes (replace "YourNewDirPath" with your directory path).

Install Toad Silently

Silent installation provides a convenient method for deploying Toad to multiple machines. With some customization, you can also deploy the license key and settings at the same time.

Note: To perform a silent install, you can use either stand-alone installer or extract the .msi from the Quest Installer, provided with Toad Suite.

Determine Which Installer to Use

Before performing a silent installation, review the following to determine which installer to use:

Installer	Advantages	Disadvantages
Executable file (.exe)	Silent installation using the .exe file has the following advantages:	Silent installation using the .exe file has the following disadvantages:

Installer	Advantages	Disadvantages
	<ul style="list-style-type: none"> Verifies whether the prerequisite software is installed, and if not, redirects you to the download location. Verifies whether a version of Toad already exists on the target computer. If so, the executable uninstalls the previous version and then installs the current version. 	<ul style="list-style-type: none"> Cannot deploy custom Toad settings files or license keys. Installer automatically exits if the prerequisite software is not installed.
Microsoft Installer file (.msi)	Supports deployment of Toad settings files and license keys.	<p>Silent installation using the .msi file has the following disadvantages:</p> <ul style="list-style-type: none"> Requires manual verification and download of any prerequisite software. Requires a manual uninstall of the previous version of Toad using Add/Remove Programs.

Silent Installation Prerequisites

Before you perform a silent installation, you must install the following software on every computer where you are installing Toad:

- Microsoft .NET Framework 4.0

Silent Installation Using the Executable

Use the executable file to perform a silent install to the default directory (or to a different directory) and to specify options such as logging installation messages.

To perform a silent install using the executable file

- At a Windows command prompt, switch to the drive or directory where the executable for Toad is located. (This file can be downloaded from the Quest web site or can be found on the Toad installation CD-ROM.)
- For a standard installation with all features enabled, enter the following command:

```
"ToadInstaller.exe" /S
```

You can customize MSIEXEC command-line options and overrides for your installation similar to the following command:

```
"ToadInstaller.exe" /S /Lx "C:\temp\installLog.txt"  
INSTALLDIR="Drive:\your_install_path" USERNAME="some_user"  
COMPANYNAME="your_company" ALLUSERS=1
```

Use the following descriptions to customize the command-line options and overrides for your installation.

Command-Line Options

The following MSIEXEC command-line options are used in this example:

Option	Description
/L "C:\temp\installLog.txt"	(Optional) Write installation messages to the specified log. You can append other options, such as <i>x</i> for debug (used in the previous example) or <i>v</i> for a verbose log. See the log section at http://msdn2.microsoft.com/en-us/library/aa367988.aspx for more information about additional logging options. Also, substitute "C:\temp\installLog.txt" in the example with the fully qualified name of the log file. Enclose this value in double quotations. The installation process creates this file if it does not exist. Otherwise, the existing file is overwritten.

Toad Default Installation Option Overrides

You can specify the following values to override Toad's default installation options. Enclose each value in double quotations.

Option	Description
INSTALLDIR	(Optional) Specify the absolute path for the directory in which you want to install Toad. If you do not include this path, the installation program defaults to: C:\Program Files\Quest Software\Toad for SQL Server 6.1.
ALLUSERS	(Optional) Specify one of the following: <ul style="list-style-type: none"> For a per-machine installation, specify <i>1</i>. This value allows any user to use the Toad shortcut on the desktop after the installation completes.

Option	Description
	<ul style="list-style-type: none"> For a per-user installation, enter the empty string value ("") This value allows only the user specified for USERNAME (and the user that installed Toad) to see the Toad shortcut on the target desktop. If USERNAME is omitted, only the user that installed Toad sees the shortcut. <p>Note: If you do not specify this property, the installation program defaults to a per-user installation.</p>
USERNAME	<p>(Optional) Specify the user that intends to use Toad on the target computer.</p> <p>Notes:</p> <ul style="list-style-type: none"> If ALLUSERS is omitted or defined with the empty string value (""), only the user specified here (and the user that installed Toad) can see the Toad shortcut on the desktop after the installation completes. If ALLUSERS is omitted or defined with the empty string value ("") and you omit the USERNAME option, only the user that installed Toad sees the Toad shortcut on the desktop. If ALLUSERS is 1, the USERNAME value is ignored during installation.
COMPANYNAME	<p>(Optional) Specify the name of the company that owns this installation.</p>
INSTALLSSMS	<p>(Optional) Set the property to "No" not to install Toad plug-in for Microsoft SQL Server Management Studio.</p> <p>Note: If you do not specify this property or specify any other value except "No", Toad plug-in for Microsoft SQL Server Management Studio will be installed.</p>
<p>Notes:</p> <ul style="list-style-type: none"> All default installation option overrides are case-sensitive. Enclose all values (except for the ALLUSERS value) in double quotations. 	

Silent Installation Using the Microsoft Installer

For Toad purchased with the Suite you should extract the .msi from the Quest Installer first.

Extract MSI file from Quest Installer

The Quest Installer can be launched in "extraction mode," which allows you to extract the Toad for SQL Server MSI installer.

Note: You do not need to install the Quest Installer on any of the computers where you are silently installing Toad products. The Quest Installer is only used to extract the required MSI files.

To launch the Quest Installer in extract mode

1. Run Toad from the command prompt and include the command-line switch "/extract".

```
"ToadInstaller.exe" /extract
```

2. The Quest Installer launches in extract mode. In the Extract Location page, specify a target location for the extracted files by entering or browsing to a directory.
3. In the Product Selection page, select the products that you want to extract.
4. Click **Extract** to extract the files.

The Finish page has a link to the directory into which the files were extracted and a link to the log file for the extraction process (Readme.txt). The extraction log contains verification of the files that have been extracted along with the command-line switches required for performing the default installation. You must run the installers in the order specified.

Perform Silent Installation Using MSI

To perform a silent install using msi

1. At a Windows command prompt, switch to the drive or directory where the msi installer for Toad is located.
2. For a standard installation with all features enabled, enter the following command:

```
"ToadInstaller.msi" /q
```

You can customize command-line options and overrides for your installation similar to the following:

```
msiexec /i "ToadInstaller.msi" INSTALLDIR= "Drive:\your_install_
path" /q USERNAME="some_user" COMPANYNAME="your_company"
ApplicationUsers="AllUsers"
```

Command-Line Options

The following MSIEXEC command-line options are used in this example:

Option	Description
/i	Run the installation.
/q	Specify the user interface (UI) that displays during installation. You can append other options, such as <i>n</i> to hide the UI or <i>b</i> to hide the Cancel button during the installation.
Note: All command-line options are case-insensitive. See http://msdn2.microsoft.com/en-us/library/aa367988.aspx for a complete list of command-line options.	

Toad Default Installation Option Overrides

You can specify the following values to override Toad's default installation options. Enclose each value in double quotations.

Option	Description
INSTALLDIR	(Optional) Specify the absolute path for the directory in which you want to install Toad. If you do not include this path, the installation program defaults to: C:\Program Files\Quest Software\Toad for SQL Server 6.1.
ALLUSERS	(Optional) Specify one of the following: <ul style="list-style-type: none"> For a per-machine installation, specify <i>1</i>. This value allows any user to use the Toad shortcut on the desktop after the installation completes. For a per-user installation, enter the empty string value (""). This value allows only the user specified for USERNAME (and the user that installed Toad) to see the Toad shortcut on the target desktop. If USERNAME is omitted, only the user that installed Toad sees the shortcut. Note: If you do not specify this property, the installation program defaults to a per-user installation.
USERNAME	(Optional) Specify the user that intends to use Toad on the target computer. Notes: <ul style="list-style-type: none"> If ALLUSERS is omitted or defined with the empty string value (""), only the user specified here (and the user that installed Toad) can see the

Option	Description
	<p>Toad shortcut on the desktop after the installation completes.</p> <ul style="list-style-type: none"> • If ALLUSERS is omitted or defined with the empty string value (""), and you omit the USERNAME option, only the user that installed Toad sees the Toad shortcut on the desktop. • If ALLUSERS is 1, the USERNAME value is ignored during installation.
COMPANYNAME	(Optional) Specify the name of the company that owns this installation.
INSTALLSSMS	<p>(Optional) Set the property to "No" not to install Toad plug-in for Microsoft SQL Server Management Studio.</p> <p>Note: If you do not specify this property or specify any other value except "No", Toad plug-in for Microsoft SQL Server Management Studio will be installed.</p>
<p>Notes:</p> <ul style="list-style-type: none"> • All default installation option overrides are case-sensitive. • Enclose all values (except for the ALLUSERS value) in double quotations. 	

Create Transform (MST) Files

You can create a Microsoft transform (.mst) file that deploys the license key, custom settings, and connections for users when performing a silent install using the .msi file. You can also use the .msi file to perform a basic silent install using the default directory (or install to a different directory) and to specify command-line options and default installation overrides. See "Perform Silent Installation Using MSI" (page 14) for more information if you are not creating a transform file.

Note: (MSI installs on Windows Vista and 7) If you are using MSI to install Toad on Windows Vista or 7 with UAC enabled, you can install a file that adds a "Run as administrator" option when right-clicking the MSI file: <http://www.symantec.com/connect/downloads/msi-run-administrator-context-menu-vista>.

The following procedure uses the Wise Installer to create the transform file.

To create a transform file that includes custom Toad settings

1. Save and install the *ToadInstaller.msi* file on a computer where the Wise for Windows Installer is installed. After customizing Toad settings, you will use the Wise Installer to create the transform file.

2. Open Notepad, and do the following:
 - a. Enter the license key in the first line.
 - b. Enter the site message in the second line. The file should look similar to the following:

AAABBBBCCCCCEDXDWMV0WJ9-123-45678-B2

Quest Software
 - c. Save the file with **license.key** as the file name in the Toad install directory. Make sure the file extension is **.key** not **.txt**.
3. Launch Toad. The application should open without prompting you to enter a license key.
4. Select **Tools | Configuration Wizard** from the Toad menu and complete the Configuration wizard. This wizard creates an initial settings file (Settings.xml).
5. Select **Tools | Options** from the menu in Toad to open the Options window.
6. Select each page in the window and set any options you want to deploy. These options create a module settings folder and files.
7. Select **View | Connection Manager** from the menu in Toad to open the Connection Manager.
8. Create any connections you want to deploy.
9. Exit Toad. Upon exiting, a Connections file is created.
10. Create the Microsoft Transform file, using any appropriate tool. The following steps describe how to use the Wise for Windows Installer to create the file.
 - a. Select **File | New**.
 - b. Select *Custom Templates* under **Categories**, and then select the *Transform* template in the New Installation File window.
 - c. Select the ToadInstaller.msi file in the Select the .MSI file to base this transform on window.
 - d. Save the project.
 - e. Select *Files* from the Feature Details view.

- f. Locate the following files and click **Add** to add them to the project:

File to Add	Windows XP, Windows Server 2003	Windows Vista, Windows Server 2008, Windows 7, Windows 8
Settings.xml	C:\Documents and Settings\ <i>username</i> \Application Data\Quest Software\Toad for SQL Server 6.1.	C:\Users\ <i>username</i> \AppData\Roaming\Quest Software\Toad for SQL Server 6.1.
ModuleSettings folder and files	C:\Documents and Settings\ <i>username</i> \Application Data\Quest Software\Toad for SQL Server 6.1\ModuleSettings.	C:\Users\ <i>username</i> \AppData\Roaming\Quest Software\Toad for SQL Server 6.1\ModuleSettings.
Connections.xml	C:\Documents and Settings\ <i>username</i> \Application Data\Quest Software\Toad for SQL Server 6.1.	C:\Users\ <i>username</i> \AppData\Roaming\Quest Software\Toad for SQL Server 6.1.

- g. Save the project and compile it to create the transform (MST) file.

11. Perform a silent install. See "Perform Silent Installation Using MSI" (page 14) for more information.

Install Toad on Citrix Systems

Toad must be installed on the Citrix server by the Citrix administrator. Users then connect to this instance through their Citrix login.

Note: Limited testing has been performed for Citrix XenApp 5.0 support on Windows Server 2003 and for Citrix XenApp 6.5 on Windows Server 2008 R2.

To install Toad on a Citrix system

1. Connect to the Citrix Environment as an administrator.
2. Copy Toad to the Citrix server, if needed.
3. Start the Toad installation process.
4. During installation, select the **Anyone who uses this computer** checkbox when

prompted.

5. Repeat steps 2 through 4 for each server in the Citrix farm.

Note: Although you must install Toad on every server in the Citrix farm, you only need to publish Toad once.

6. Review the following considerations regarding licensing:
 - A license supplied by an administrator always overrides a user-supplied license in a Citrix environment.
 - If you need to provide the same Toad functionality to all users, you can enter the default license key for all users.
 - If you have users with different license requirements (for example, some have Standard licenses and others have Professional licenses), individual licenses should be entered for each user. You should not enter the default license key because it enables all functionality in Toad.

Upgrade Toad

Note: If you want to eliminate the need to upgrade an Automation script's scheduling task every time you upgrade to a new version of Toad, you can customize the install directory path. To learn more, see Upgrade Automation Scripts and Scheduled Tasks (page 19), before installing Toad.

To upgrade Toad

1. Run Toad installer from the DVD or downloaded file.
2. Select the products you want to install and click **Install**.

If you are upgrading from a previous version of Toad, you are prompted to migrate your settings the first time you start Toad. The settings files include database connections, layout customizations, shortcut keys, and options customized in the Options pages.

To migrate the settings again, remove or rename the current version's Application Data folder and migrate the files from the previous version's Application Data folder.

Upgrade Automation Scripts and Scheduled Tasks

If you upgrade to a newer version of Toad, Automation scripts created in a previous version must be upgraded before you can open them in the newer version. Toad prompts you to automatically upgrade a script when you attempt to open it.

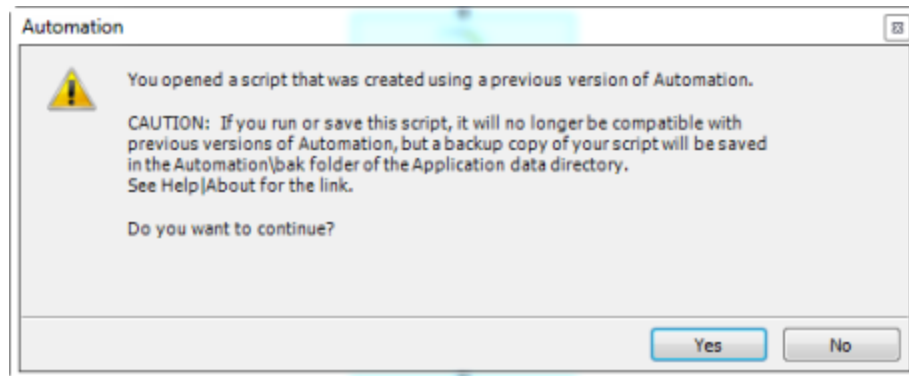
If you have scheduled scripts that currently run using an earlier version of Toad, if you upgrade Toad, you must upgrade the scripts' Windows scheduling tasks if you want to run them in the newer version.

Upgrade Automation Scripts

An automation script is compatible with the version of Toad in which the script was created. If you want to run a script using a newer version of Toad, you must upgrade the script. Toad automatically prompts you to upgrade the script the first time you open it in the newer version.

To upgrade an Automation script

1. Open the script in Toad. Toad prompts you to upgrade the script.



2. To upgrade the script, select **Yes**.

Caution: If you upgrade an automation script, it will no longer be compatible with earlier versions of Toad.

3. Select **No** (and do not elect to save the script), to keep the script compatible with the previous version.
4. If you selected Yes, Toad upgrades your script and saves a backup copy of the original script in the following location:

<application data directory>\Automation\bak

5. If the script you upgraded is scheduled, you must also modify the Windows scheduling task by specifying that the newer version of Toad be used to run the script, otherwise the script will fail to run. See "Upgrade Scheduled Scripts" (page 20) for more information.

Upgrade Scheduled Scripts

Scheduled Automation scripts use Windows scheduling tasks. The scheduling task contains the path to *toad.exe*. This path normally includes the version of Toad in which the script was scheduled. If you upgrade to a newer version of Toad and you want to run your scheduled scripts using this newer version, you must change the *toad.exe* path in the Windows scheduling tasks.

Notes:

- If you install Toad side-by-side, previously-scheduled scripts continue to run using the previous version of Toad until you upgrade the scheduling tasks.
- If you install Toad side-by-side and then uninstalled the previous version, you must upgrade the scheduling tasks.
- If you install Toad side-by-side, previously-scheduled scripts continue to run using the previous version of Toad, unless you open the scripts in the newer version, at which point you must upgrade the scheduling task or the script will fail to run.

To upgrade a script's scheduling task in Windows

1. Go to **Start | Control Panel | Administrative Tools | Task Scheduler**.
2. Select the Task Scheduler (Local) node and find the script's scheduling task.
3. Double-click the script's scheduling task to open it. Then select **Properties** from the Actions pane (or right-click the task name and select **Properties**).
4. In the Properties dialog, select the Actions tab.
5. Select the "Start a program" action and click **Edit**.
6. Update the folder name in the displayed path (the path to *toad.exe*) to reflect the path to the newer version of Toad.

Note: You can also edit the task from within Toad (although, the details of this task action might be easier to view in the Task Scheduler). To use Toad, select **Tools | Administer | Job Manager**. In the Task List, right-click the task and select **Edit Task**.

Work-around for Scheduled Scripts: Install Toad into a Generic Path

You can eliminate the need to modify the path to *toad.exe* in the scheduling tasks each time you upgrade Toad by installing Toad into a generic path.

Note: This workaround only affects scripts scheduled after implementing the workaround.

To install Toad into a generic path

- Install your current version and all future versions of Toad into a directory with a generic name (instead of the default directory suggested by the installer). For example, always install into a directory named "Toad for SQL Server" instead of "Toad for SQL Server 6.1."

Notes:

- You cannot run two or more versions of Toad side-by-side when you use this work-around.
- You must manually uninstall Toad from the generic directory before installing a newer version into the same directory.

Files Migrated During Upgrades

When upgrading to a new version of Toad, the following files can be migrated from the previous version's Application Data Directory (click the *Application Data Directory* link in **Help** | **About** to open the directory).

Caution! Migrating settings from a previous version of Toad may overwrite new settings files, implemented for the current release (for example, updated reports templates, layouts, etc).

File	Description
Action.log	Tracks your usage within Toad. If you agree to share this data, the file is automatically sent to Quest on a periodic basis.
Connections.xml	Contains all connections stored in the Connection Manager or the New Connection window.
ConnectionTrace.log	Contains the SQL Output connection trace log file if you select Tools Execution Trace from the menu.
ExceptionTrace.log	Contains a log of all exceptions encountered while running Toad.
FTPConnection.log	Contains a log of exceptions encountered when attempting to connect to FTP servers.
FTPConnections.xml	Contains connections to FTP servers stored in the FTP Connections window.
Quest.PersistentCache.xml	Contains the private object annotation cache options (object notes, Lookup tables, and hidden columns). You can share these options with other Toad users in Tools Options Database Cache .
Settings.xml	Contains many of the global configuration settings.
SqlServerPlanPrefs.xml	Used to generate SQL Server execution plans.
ToadSupportBundle.zip	Contains the last support bundle you generated.
Folder	Description
Automation (temporary folder)	Used by automation when executing automation scripts.
Cache	Used to spool cache database metadata to disk if enabled. The data is in binary format and can always be

	recreated by fetching it from the database.
Context	<p>Contains settings that depend on the context within Toad including the following:</p> <ul style="list-style-type: none"> • Adapter—Custom data editing statements. • Filter—Unnamed filters defined in the Object Explorer or Database Explorer. • Named Filter—Named filters defined in the Object Explorer or Database Explorer. • TYPE—Tabs that display on the right when you select an object in the Object Explorer or Database Explorer.
Document Recovery	Contains backup copies of Editor, Query Builder, and Database Diagram files saved if you have enabled Document Recovery in Tools Options Environment General .
Keyboard	Contains custom keyboard shortcut layouts.
Layouts	Contains layouts for some areas in Toad, such as tool windows that automatically display in the Editor and column layouts for the Messages tab.
ModuleSettings	Contains general settings for various components in Toad, such as whether the data grid defaults to read-only, displays not null indicators, etc.
Plugins	Used by Toad plugin components.
Session	Contains desktop configurations, including toolbar customizations and tool window locations.
SQLFormatter	Contains pre-set and user created templates for formatting SQL, and the SQL statement used to preview formatting changes in the Formatting Options page.
SQLRecall	Contains the SQL statements saved by SQL Recall.
Templates	<p>Contains the following templates:</p> <ul style="list-style-type: none"> • Code Templates—Templates used to define default values when creating new objects in the Object Explorer or Database Browser. • Scripts—Startup scripts to run when connecting (InitialSqlServer.Sql). • Snippets—Code Snippet entries. • Reports—Report entries.

Integration between Toad and Microsoft SQL Server Management Studio

Toad provides a plug-in that integrates Toad features in Microsoft SQL Server Management Studio. Enjoy advantages of both products and ease of communication. Toad Plug-in is installed as a part of Toad for SQL Server installation process and supports the following versions of Management Studio:

- Microsoft SQL Server Management Studio 2012
- Microsoft SQL Server Management Studio 2008 R2 SP2 or later

Toad Plug-in allows to invoke key Toad features right from the Management Studio context menu and send data directly into Toad. Connection information and security settings are transferred automatically and Toad functionality is already up&running.

According to the Toad Edition you run the following Toad features can be invoked from the Management Studio:

- Group Execute
- Automation
- Log Reader
- Data Compare
- Schema Compare
- Importing and Exporting Data
- Session Browser
- Performance Monitor
- Index Fragmentation
- and etc.

Note: In case you have several editions of Toad for SQL Server installed side-by-side (for example, Beta, Trial and Commercial) and uninstall one of them, Toad Plug-in files are removed as a part of uninstallation process. See "Troubleshoot SQL Server Issues" (page 30) for more information how to restore Toad Plug-in manually.

Install and Uninstall Toad plug-in

Launch SsmsInstallation.exe from the Windows command prompt as administrator.

1. Open SSMS Installation directory (<Toad install directory>/ SSMS Installation) from the Windows command prompt.
2. Enter the following:


```
SsmsInstallation.exe [Type of Product/Mode] "[TSS Installation Directory]"
```

Where:

[Type of Product/Mode] can be Uninstall, Freeware, Beta, Commercial, Trial

[TSS Installation Directory] is the directory where Toad for SQL Server resides.

Example:

```
C:\Program Files (x86)\Quest Software\Toad for SQL Server 6.1\SSMS  
Installation\SsmsInstallation.exe Commercial "C:\Program Files (x86)\Quest  
Software\Toad for SQL Server 6.1"
```

Uninstall Toad

If you uninstall Toad, it may not uninstall completely. When you use Toad, you create new files such as SQL scripts, data output, or temp files, etc. The following types of files are not removed when you uninstall:

- Any new files you create
- Any copies of files you make for backup purposes
- Settings files

You can uninstall Toad for SQL Server by using the Quest Installer or by using the Windows Add/Remove Programs (or Uninstall a program) feature. Quest Installer is the preferred way to uninstall Toad for SQL Server.

To uninstall Toad using Quest Installer

1. Select **Start | All Programs | Quest Software | Uninstall Quest Products**. The Quest Installer opens.
2. Select the product that you want to uninstall.
3. Click **Uninstall**.

Register Toad

To register Toad

1. Select **Help | Licensing** from the menu (ALT+H+L).
2. Review the following for additional information:

Authorization key	Enter the license key for Toad.
Site message	Enter the site message included with the license key.

Note: Your license key determines the edition of Toad (Freeware, Base, Xpert, etc.) and will enable the functionality accordingly. In many cases, if functionality is disabled within Toad, you may not have an appropriate license to use it. When Toad is running, you can see which components are licensed by selecting **Help | About**. For complete list of features shipped with your Toad edition see www.quest.com.

Notes for Toad for SQL Server Users

Trial Keys

The commercial version of Toad for SQL Server comes pre-installed with a trial license key for your convenience. This allows you to use the application while waiting for your commercial key to be delivered.

The trial license key remains active for the designated trial period, even after you enter your commercial license key (the splash screen may continue to indicate your application is a trial version). This is helpful if you are previewing an upgrade or an advanced module.

Important: When installing commercial Toad for SQL Server bundle after trial Toad for SQL Server bundle, the commercial bundle recognizes a license key from the trial bundle and expires the same date as the trial bundle's key. To continue working with the commercial bundle please input a valid (commercial or new trial) license key.

If you entered your commercial license key and do not require the trial version, you can delete the trial key.

To delete a trial key

1. Select **Help | Licensing**.
2. In the Toad Licensing dialog, find the License tab for the trial license key and click **Delete License** to delete the trial key.

Create and Troubleshoot Connections

Understand Toad Connections

In Toad, a connection represents one or more actual connections to the database. Toad creates an initial database connection for general usage. It also creates a separate database connection for each Editor (the first time you execute a statement) and a separate database connection for each Data tab in the Database Explorer (the first time you select the tab and data is queried). The database connection for each Editor and Data tab remain open until you close the associated window; however, the connections remain in an inactive state if a statement is not currently executing.

Tips:

- To view the number of actual database connections that exist for a Toad connection and how many of those database connections are active, place the cursor over the connection in the Connection Manager or the Connection toolbar.
- You can view the progress of statements executing in the background in a progress bar located on the lower right side of the status bar. To cancel a script's execution, click the progress bar to display the Background Processes window. It is recommended to cancel only your own processes, as terminating Toad activities may lead to unexpected behavior.

Share Database Connections

Editors and Data tabs can share the same database connection when the connection is inactive if you clear the **Use specific connection for each open editor** checkbox in **Tools | Options | Editor | General**. Any new executions or windows attempt to use this connection first. For example; if you share a database connection, you can execute a query in the Editor, execute another query in a new Editor, and then select the Data tab from the same connection. If the connection is in use and you attempt to execute it, one of the following occurs:

- If your database does not support executing multiple queries on a shared connection, a dialog prompts you to either permanently associate the window with a new database connection, cancel the previous operation, or add the query to a queue until the current operation completes, and then execute it. If you place multiple queries in the queue, each one executes in the order that it was added to the queue.

Note: Although you can share a database connection, any commits apply to the selected window only.


Create SQL Server and SQL Azure Connections



You can create a new connection, or connect to an existing connection from the Create New Connection window. See "Troubleshoot SQL Server Issues" (page 30) for more information about troubleshooting connection issues.

Note: For SQL Azure connections:

- To be able to utilize majority of Toad functionality please grant VIEW DEFINITION on the SQL Azure databases you want to work with.
- You can login to Windows Azure Platform by selecting **Tools | Cloud Computing | SQL Azure Portal** and providing your credentials.
- Make sure that no Azure firewall rule restricts your IP address from having access to Azure server. See "Create and Alter Azure Firewall Rules" in the online help for more information.

To create a new connection

1. Click  on the toolbar (ALT+F+N).
2. Select *SQL Server* from the **Group** list box.
3. Review the following for additional information:

Login Tab	Description
Server name	Enter the name of the server to use when connecting. Click  to display any servers running SQL Server that are currently active on the network. Notes: <ul style="list-style-type: none">• For SQL Azure connections, enter InstanceName.database.windows.net in this field.• For named instances, enter the MachineName\InstanceName in this field.
Password	Enter the password to use when connecting. Tip: After connecting, you can set a master password to further secure your connection in Tools Options Environment Security .
Category	Select or create a category if you want to color code Editor tabs for a specific connection. This can help differentiate between development and production databases. You can also set an option to color code the Object Explorer pane and object editor windows (Create, Alter, Drop, etc.). 

	Click here to view a video of this feature.
Encrypt connection	Select this option to enable encryption for the current connection provided that the certificate has been already installed on the server.
Advanced Tab	Description
Network protocol	Select one of the following: <ul style="list-style-type: none">• Shared Memory• TCP/IP• Named Pipes Note: When establishing Named Pipes connection "Poll service status in connection list" option should be cleared.
Parameter Name/Value	You can add parameters to the connection. Toad includes the Application Name parameter with value <i>Toad for SQL Server</i> by default.


4. Click **Connect** to save the connection and immediately connect to the database.

or

Click **Save** to save the connection without connecting to the database.

Tip: Connections are stored in the connections.xml file and can be found by clicking the *Application Data Directory* link in **Help | About**.

To import connections (including Central Management Server connections)

1. Click .
2. Specify location where the connections currently reside.

Note: Review the following for additional information on CMS connections:

- To import CMS connections select a server of the list, where the CMS is registered. The connection to this SQL Server instance should be created beforehand.
 - CMS is available starting with Microsoft SQL Server 2008.
 - User should have an appropriate login (Windows Authentication and grant to connect to selected server are required) created on the server to which he connects via CMS.
3. Select the connections to be imported.

Troubleshoot SQL Server Issues

Installation Issues

The following table describes issues related to installing Toad.

Issue	Cause/Solution
When installing Toad using Quest Installer on Windows 7 64-bit, Program Compatibility Assistant may appear with “This program might not have installed correctly” message.	Solution: Select This program installed correctly to continue installation. For more information, see http://windows.microsoft.com/en-PH/windows7/Program-Compatibility-Assistant-frequently-asked-questions

Toad Plug-in for Microsoft SQL Server Management Studio Issues


Issue	Cause/Solution
Toad Plug-in cannot be invoked from Microsoft SQL Server Management Studio after you uninstalled one of several editions of Toad that resided on your machine side-by-side.	<p>If you have several editions of Toad for SQL Server installed side-by-side (for example, Beta, Trial and Commercial) and you uninstall one of them, Toad Plug-in files are removed as a part of un-installation process.</p> <p>Solution:</p> <p>Select one of the following:</p> <ul style="list-style-type: none">• Reinstall Toad for SQL Server. All current settings will be available after Toad reinstallation.• Launch SsmsInstallation.exe from the Windows command prompt as administrator.<ol style="list-style-type: none">1. Open SSMS Installation directory (<Toad install directory>/ SSMS Installation) from the Windows command prompt.2. Enter the following: <code>SsmsInstallation.exe [Type of Product/Mode] "[TSS Installation Directory]"</code> Where: [Type of Product/Mode] can be Uninstall,

Issue	Cause/Solution
	<p>Freeware, Beta, Commercial, Trial [TSS Installation Directory] is the directory where Toad for SQL Server resides.</p> <p>Example: C:\Program Files (x86)\Quest Software\Toad for SQL Server 6.1\SSMS Installation\ssmsInstallation.exe Commercial "C:\Program Files (x86)\Quest Software\Toad for SQL Server 6.1"</p>

Connection Issues

Review the following solutions to help troubleshoot SQL Server connection issues in Toad.

Issue	Cause/Solution
Cannot specify a port number when connecting	<p>Currently, Toad does not have a separate field for specifying a port number.</p> <p>Solution:</p> <p>You can connect if you know the port number for the instance by entering the following in the Server name field on the New Connection window:</p> <p>ServerName,Port or IPAddress,Port</p> <p>For example: 10.1.29.129,1234 (where 1234 is the port number of the instance)</p>
Cannot connect to a remote instance in SQL Server 2005	<p>Remote connections may not be enabled in SQL Server 2005. Also, named instances are configured to use dynamic ports and select an available port once the SQL Server Service starts. If you are connecting to a named instance through a firewall, configure the Database Engine to listen on a specific port, so that the appropriate port is opened in the firewall.</p> <p>Note: Remote connections are disabled by default in the Express and Developer editions of SQL Server 2005.</p> <p>Solution:</p> <p>To enable remote connections, see "How to configure SQL Server 2005 to allow remote connections" at: http://support.microsoft.com/kb/914277</p>

Issue	Cause/Solution
<p>"Path is not of a legal form" error message when connecting or</p> <p>"Could not find a part of the path C:\Program Files\Quest Software\Toad for SQL Server\Template\Scripts\InitialSqlServer.Sql" error message when connecting</p>	<p>You attempted to migrate settings from a previous install of Toad to the current install, but the settings file (InitialSqlServer.Sql) for the previous install was either removed, moved, or corrupt.</p> <p>You may also receive this error if you installed Toad and migrated settings from a previous version, and later uninstalled the previous version.</p> <p>Solution:</p> <p>You must specify a valid location for the InitialSqlServer.Sql file in Toad.</p> <p><i>To specify a valid location</i></p> <ol style="list-style-type: none"> 1. Open the SQL Server options page under Tools Options Database SQL Server. 2. Specify the location for the new install's InitialSqlServer.Sql file in the Run Script on new connection field. <p>By default, this file is located in the following directory: C:\Program Files\Quest Software\Toad for SQL Server <i>version</i> \Templates\Scripts</p> <p>Note: Clicking  may result in a "Path not found error". If you receive this error, manually enter the location in the field.</p>
<p>Cannot establish Named Pipes connection</p>	<p>If you are trying to connect to the server using Named Pipes, "Poll service status in connection list" option should be cleared.</p> <p>Solution:</p> <ol style="list-style-type: none"> 1. Open the options page under Tools Options Database General. 2. Clear Poll service status in connection list checkbox.
<p>Cannot establish Azure connection</p>	<p>Failing to establish Azure connection may indicate that your IP address is restricted from having access to the Azure server.</p> <p>Solutions:</p> <ol style="list-style-type: none"> 1. Select Tools Cloud Computing SQL Azure Portal to login to Azure Portal. 2. Create a firewall rule on the master database, enabling access to current IP address or range. See "Create and Alter Azure Firewall Rules" in the online help for more information.

Issue	Cause/Solution
Cannot access some functionality when working with Azure connection.	To utilize majority of Toad functionality VIEW DEFINITION grant is required for those databases you want to work with.

Configure Version Control

About Version Control

Toad integrates with your existing version control system so you can maintain multiple revisions of objects and SQL scripts . See "Configure Version Control" (page 35) for more information on configuring version control in Toad.

Important: See "Troubleshoot Version Control" (page 41) for more information about issues when upgrading version control from a previous version.

Notes:

- Version Control can be configured for MS SQL Server 2005, 2008, 2008 R2 and 2012.
- If you want to place database objects under version control, you must configure version control for objects using the Object Explorer. Once configured, you can manage SQL scripts there. The main advantage of managing scripts in the Object Explorer is that you can easily share them with team members who have version control configured. See "Manage Objects under Version Control" (page 37) for more information.
- If you rename a version controlled object, Toad drops the original object and its history from version control and prompts you to add the renamed object to version control. This newly renamed object does not have any history associated with it.
- Currently, CLR objects are not supported by version control.

Prerequisites

You must install a supported version control client on the computer where Toad is installed. The following table lists the supported version control providers and the versions tested with Toad.

Supported Provider	Server Version Tested	Client Version Tested
Subversion	Subversion 1.7.5 on Windows	CollabNet Subversion Command-Line Client 1.7.5 Note: Any Subversion client must have svn.exe in its installation directory to use version control in Toad.

Supported Provider	Server Version Tested	Client Version Tested
Team Foundation Server (TFS)	TFS 2008, 2010, 2012	Visual Studio (2008, 2010, 2012) Team Explorer Client
File system based	Toad allows to utilize practically any version control system using the external client tool. In this case Toad Version Control tool works with the directories at local HDD while you commit changes to the repository with version control client tool.	

Note: Toad connects to your version control system based on login information included in the configuration. Your version control client does not need to run for Toad to connect.

The following objects can be added to Version Control:

TABLE

VIEW

STORED PROCEDURE

FUNCTION

SEQUENCE

UDDT

RULE

DEFAULT

SQL SCRIPT

Configure Version Control

To configure version control

1. Ensure that a supported version control client is installed on the computer where Toad is installed. See "About Version Control" (page 34) for more information about tested version control clients and supported versions.
2. Right-click one or more objects in the Object Explorer and select **Version Control | Version Control Wizard**.

Note: Version control is configured for individual databases separately. You cannot configure version control on server level.

3. Review the following for additional information:

Version Control System Page	Description
Type	<p>Select the version control system name:</p> <ul style="list-style-type: none"> Subversion Note: The version number beside Subversion is an internal file definition used by Toad to check if an update for this file is available. It is not the actual version number for the version control provider. Team Foundation Server Note: If you select TFS, you must specify the workspace name for the provider in the Team Foundation Server Properties window that displays. File system based
Properties	<p>(Subversion only) Click this button (beside the Type field) and complete the binary path. Enter the path where the Subversion client that contains svn.exe is installed. For example, if you installed the CollabNet Subversion Client, you would enter: C:\Program Files\CollabNet Subversion Client Note: <i>Do not</i> include svn.exe in the path.</p>
Server	<p>Select one of the following:</p> <ul style="list-style-type: none"> Subversion—Specify the existing working folder for the version control repository or specify the server string (for example: <code>svn://MyServer</code>). TFS—Specify the server where your version control provider is installed and the port number (default is 8080) to use in the following format: <ul style="list-style-type: none"> <code>http://MyServer:Port</code> for TSF 2008 <code>http://MyServer:Port/TFS</code> for TFS 2010, 2012 File System Based—Specify a directory at your local machine.
User name/ Password	<p>Enter your Subversion command-line user name and password and click Login. Note: For TFS only, if you leave the user name and password fields blank, Toad uses your default Windows credentials.</p>

Default Version Control Settings Page	Description
Version control folder	Select the folder on the version control server where you want to check objects and scripts in. If you already have objects or scripts under version control, select the folder on the server where these objects or scripts are located. Note: Version control automatically checks out objects or scripts in this folder and any subfolders to the location you specify in the Working folder field.
Working folder	Select the root repository folder on the client computer to use as the default working folder for checking objects and SQL scripts out. If you already have objects or SQL scripts under version control, select the existing working folder for these.

4. Manage object and scripts using Version Control. See "Manage Objects under Version Control" (page 37) for more information.


Manage Objects under Version Control

Note: Version Control should be configured in Toad before you start managing objects. See "Configure Version Control" (page 35) for more information.

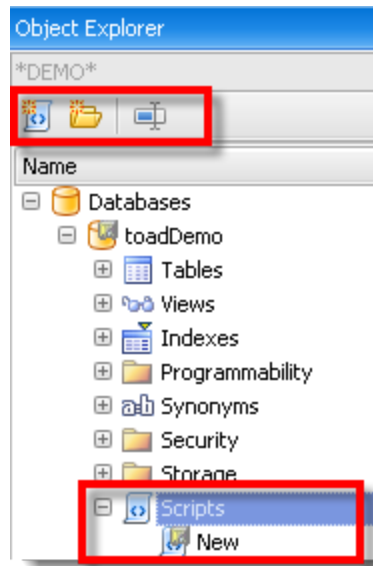
To add objects and scripts under version control

- » Right-click an object or script and select **Commit**.

Tips:

- The objects under version control are marked with  sign at the top right corner of the object's icon.
- If you rename a version controlled object, Toad drops the original object and its history from version control and prompts you to add the renamed object to version control. This newly renamed object does not have any history associated with it.
- You can create and version control SQL scripts for current database using the Scripts

node in the Object Explorer. Click  to create the new script.



To manage objects and scripts under version control

1. Determine object's version control status. Hover a mouse over the object in the Object Explorer to see its status. Review the following for additional information:

Version Control status	Description
Uninitialized	The object status is undetermined yet. This is a temporary status that is issued for all objects during version control status processing.
Untracked	The object is not added to version control.
Ignored	The object is added to ignore list and excluded from version control.
UpToDate	The object is under version control and is synchronized with version control repository. No changes are detected.
Modified	The object is under version control and has been modified by user. The changes are stored in local database only and need to be synchronized with version control repository.
Merge	The object is under version control and has been

Version Control status	Description
	<p>modified in both local database and version control repository.</p> <p>Note: Toad's Version Control feature does not allow to merge object scripts.</p>
OutOfDate	The object is under version control and has been modified in version control repository.
Unknown	<p>The object is under version control but for some reason its status cannot be determined (for example, you created a script in your local database while the script with the same name already exists in version control repository, or you upgraded to a higher version of Toad and configured version control for the same repository while you have some uncommitted changes in the database).</p> <p>Tip: If you are sure that the object is up to date but is listed as unknown, commit the object in version control system to resolve unknown status.</p>
Deleted	<p>The object was under version control, but it was dropped or renamed in local database and exists only in version control repository.</p> <p>Tip: You can see deleted objects in the Controlled objects pane only. To access it right-click any object and select Show perspective. Once you commit changes in Controlled objects pane, the object with all history will be deleted from version control repository.</p>
NotInView	The object is under version control and exists in version control repository only.

- Right-click an object or script and select one of the following actions:

Use	To...
Show perspective	Select to review all controlled objects for current configuration.
Diff	<p>Select to review differences between the object script in your local database and the object's revision that was applied to it.</p> <p>Note: Diff is unavailable for File System Based configuration.</p>

Use	To...
Diff with latest revision	Select to review differences between the object script in your local database and the latest revision in the version control repository.
<p>Example: You got the latest object revision from the repository 2 days ago. By the time you did it, the latest revision was 5. Yesterday your colleague worked with the same object and committed changes in the repository, which are now marked as revision 6.</p> <p>Today you altered the object's script and want to see the differences. You can select one of the following:</p> <ul style="list-style-type: none"> • Diff—To compare the object in your local database with revision 5. • Diff with latest revision—To compare the object in your local database with revision 6. 	
Show history	<p>Select to review all commits for selected object.</p> <p>Tip: Select Show history on database to review all commits.</p> <p>Note: Show History is unavailable for File System Based configuration.</p>
Get latest revision	Select to apply object's changes from the version control repository to your local database. The synchronization script is generated to update selected object to the latest revision.
Commit	<p>Select to apply object's changes from your local database to the version control repository.</p> <p>Note: You should write a comment when committing changes.</p>
Undo changes	Select to rollback changes in your local database. The synchronization script is generated to revert object to the revision which was applied last time.
Update status	Select to compare a script in your local database with the script in the repository. New status will be issued according to the comparison results.
Add to ignore list	Select to exclude object from the version control. Ignored objects are not listed in Controlled Objects pane, Commit and Get latest revision are disabled.
Remove from ignore list	Select to set object status as <i>Untracked</i> and add it to version control.

Use	To...
Open in Windows Explorer	Select to navigate to the file in the Windows Explorer.

Tip: You can enable, disable, or delete a version control configuration under **Tools | Options | Version Control | Configurations**.

Troubleshoot Version Control

Troubleshoot Upgrades

For this release, the back-end of version control has been rewritten. If you previously used version control in Toad, the following may occur:

- Version control settings are not migrated from the previous version of Toad, so you have to reconfigure version control in Toad.
- In previous releases, the method Toad used to generate the script was different than the current method. After upgrading Toad and reconfiguring version control, the local revision of the objects differs from version control repository (The objects have Unknown status). If the object in your database is current, you should commit it into version control.

Troubleshoot Other Issues

Review the following to help troubleshoot issues with version control:

Subversion Issues	Description
System cannot find file	If a message stating that, “The system cannot find the file specified” displays, this usually means that the Subversion executable cannot be found in the path you specified in the BinaryPath field of the Command Based Version Control Properties window. Verify that svn.exe exists in the directory you specified in this field.
Command execution	When executing Subversion commands, user input is not allowed. This presents an issue when the user is using Subversion with the SSH method and must enter a password to establish the Secure Shell. Workaround: Generate identity keys that automatically authenticate between the client and the server when connecting with SSH.
OutOfMemory exception	When adding a large number of objects, Subversion may encounter OutOfMemory exception.

when adding a large number of objects	Workaround: Commit objects in several steps.
SVN is missing in the list of available providers	If Subversion is missing in the list of available version control providers, it means that Subversion.xml was removed or corrupted. Workaround: Contact Support to get a new Subversion.xml and place it under <code><Toad install path>/Templates/Version Control/</code> .
Object Issues	Description
Adding multiple objects failed	When you add multiple objects to version control, the objects are grouped and added in batches (for example, all the tables for a particular schema are added at once). If an error (for example, failure to support Korean characters) causes this command to fail, none of the objects are added.
Script Issues	Description
Canceled check-in	SQL scripts remain checked out if a change was made to the text, but check-in was canceled during the prompt for a check-in comment. This behavior is by design—that is; the user can either undo the checkout or check in the script using the right-click menu in the Scripts node/folder/tab of the Object Explorer. Note: If you alter the object again, you receive a prompt to use the “locally changed” script. Click Yes to use the locally changed copy; click No to refresh the local copy from the source repository; click Cancel to cancel the prompt.

Configure SQL Server Debugging

Configure SQL Server Debugging

Debugging Prerequisites

Before configuring the Debugger, verify that the following prerequisites have been met:

- Disable all firewalls or open corresponding ports. Windows XP Service Pack 2 includes an embedded Windows firewall that should be disabled or ports opened as well. Specifically, the TCP 135 port must be opened and the Toad.exe must be added to the Exceptions list. The same is true for the remote (SQL Server) machine - TCP 135 port must be opened and sqlservr.exe must be added to the Exceptions list.
- Stop any antivirus software that can lock the corresponding components, settings, etc.
- Check your security policy because it may include an access lock to the remote server.

Notes:

- The security policy can be applied to the domain or local computer.
- Currently, you cannot debug CLR stored procedures.

Platforms Tested for Debugging Support

The following platforms have been tested for debugging support.

Note: The Service Pack on the client must match the Service Pack on the server unless specified otherwise.

SQL Server 2012 Platforms Tested for Debugging							
Client	Server						
	2003 EE (SP2)	2000 (SP4)	2000 Pro (SP4)	XP Pro (SP3)	Vista	Server 2008	7
2003 EE (SP1)	✗	✗	✗	✗	✗	✗	✗
XP Pro (SP3)	✓	✗	✗	✓	✗	✗	✗
Vista	✗	✗	✗	✗	✗	✗	✗

SQL Server 2012 Platforms Tested for Debugging							
Client	Server						
	2003 EE (SP2)	2000 (SP4)	2000 Pro (SP4)	XP Pro (SP3)	Vista	Server 2008	7
Server 2008	✗	✗	✗	✗	✗	✗	✗
7	✗	✗	✗	✗	✗	✓	✗

SQL Server 2008 Platforms Tested for Debugging							
Client	Server						
	2003 EE (SP2)	2000 (SP4)	2000 Pro (SP4)	XP Pro (SP3)	Vista	Server 2008	7
2003 EE (SP1)	✗	✗	✗	✗	✗	✗	✗
XP Pro (SP3)	✓	✗	✗	✓	✗	✗	✗
Vista	✗	✗	✗	✗	✗	✗	✗
Server 2008	✗	✗	✗	✗	✗	✗	✗
7	✗	✗	✗	✗	✗	✓	✗

SQL Server 2005 Platforms Tested for Debugging							
Client	Server						
	2003 EE (SP1)	2000 (SP4)	2000 Pro (SP4)	XP Pro (SP3)	Vista	Server 2008	7
2003 EE (SP1)	✓	✓	✓	✓	✗	✗	✗
XP Pro (SP3)	✓	✓	✓	✓	✗	✗	✗
Vista	✗	✗	✗	✗	✓	✗	✗
Server 2008	✗	✗	✗	✗	✗	✗	✗
7	✓	✗	✗	✗	✗	✗	✗

SQL Server 2000 (SP4) Platforms Tested for Debugging							
Client	Server						
	2003 EE (SP1)	2000 (SP4)	2000 Pro (SP4)	XP Pro (SP2)	Vista	Server 2008	7
2003 EE (SP1)	✓	✗	✗	✗	✗	✗	✗
XP Pro (SP2)	✓	✓	✗	✓ (Local server)	✗	✗	✗
Vista	✗	✗	✗	✗	✗	✗	✗
Server 2008	✗	✗	✗	✗	✗	✗	✗
7	✗	✗	✗	✗	✗	✗	✗

Configure Debugging for SQL Server 2012

To debug locally, perform the following on the Toad client

1. Install the SQL Server 2012 Client Tools on the Toad client.
2. If autocommit is disabled, commit or rollback the connection in Toad before starting the debugging session.

To debug remotely, perform the following

1. Install the SQL Server 2012 Client Tools on the Toad client.
2. Set the following permission. Your server login must also be a member of the sysadmin role. This login can be your Windows user account (Windows authentication), or a SQL Server login (SQL Server authentication).

To create a server login from your Windows account and add it to the sysadmin role, a user who already has sysadmin privileges must execute the following:

```
sp_addsrvrolemember 'Domain\Name', 'sysadmin'
```

where *Domain\Name* is your Windows login.

3. If autocommit is disabled, commit or rollback the connection in Toad before starting the debugging session.

Configure Debugging for SQL Server 2008

To debug locally, perform the following on the Toad client

1. Install the SQL Server 2008 Client Tools on the Toad client.
2. If autocommit is disabled, commit or rollback the connection in Toad before starting the debugging session.

To debug remotely, perform the following

1. Install the SQL Server 2008 Client Tools on the Toad client.
2. Make sure the following permissions are set:
 - Your Windows account that Toad is running under must be a member of sysadmin server role in the SQL Server being debugged.
 - Your server login must also be a member of the sysadmin role. This login can be your Windows user account (Windows authentication), or a SQL Server login (SQL Server authentication).

To create a server login from your Windows account and add it to the sysadmin role, a user who already has sysadmin privileges must execute the following:

```
sp_addsrvrolemember 'Domain\Name', 'sysadmin'
```

where *Domain\Name* is your Windows login.

3. If autocommit is disabled, commit or rollback the connection in Toad before starting the debugging session.

Configure Debugging for SQL Server 2005

To debug locally, perform the following on the Toad client

1. Install the SQL Server 2005 Workstation Component option of the SQL Server 2005 installation.
2. If autocommit is disabled, commit or rollback the connection in Toad before starting the debugging session.

To debug remotely, perform the following

1. Complete the following:
 - a. Install the SQL Server 2005 Workstation Components option of the SQL Server 2005 installation on the Toad client.
 - b. Copy and register the **ssdebugps.dll** (debugging host component) on both the client and server. This file is located by default in the following directory on the server where SQL Server 2005 is installed:

C:\Program Files\ Common Files\Microsoft Shared\SQL Debugging

To register this file, open a command prompt and enter the following command:

```
regsvr32 ssdebugps.dll
```

Note: If you are unable to locate this file, you can run the remote debugging setup component (rdbgsetup.exe). This file is located by default in the following directory on the server where SQL Server 2005 is installed:

C:\Program Files\Microsoft SQL Server\90\Shared\1033

2. Make sure the following permissions are set:
 - Your Windows account that Toad is running under must be a member of sysadmin server role in the SQL Server being debugged.
 - Your server login must also be a member of the sysadmin role. This login can be your Windows user account (Windows authentication), or a SQL Server login (SQL Server authentication).

To create a server login from your Windows account and add it to the sysadmin role, a user who already has sysadmin privileges must execute the following:

```
sp_addsrvrolemember 'Domain\Name', 'sysadmin'
```

where *Domain\Name* is your Windows login.

3. If autocommit is disabled, commit or rollback the connection in Toad before starting the debugging session.

Configure Debugging for SQL Server 2000

To debug locally, perform the following on the Toad client

1. Make sure that SQL Server 2000 with Service Pack 3 or Service Pack 4 is installed on the server.
2. Install the SQL Server Client Tools on the Toad client.
3. If autocommit is disabled, commit or rollback the connection in Toad before starting the debugging session.

To debug remotely, perform the following

1. Complete the following:
 - a. Make sure that SQL Server 2000 with Service Pack 3 or Service Pack 4 is installed on the server.
 - b. Install the SQL Server Client Tools on the Toad client.
 - c. Copy and register the **sqldbg.dll** and **sqldbreg2.exe** (debugging host components) on both the Toad client and server. These files are located by default in the following directory on the server where SQL Server 2000 is installed:

C:\Program Files\Common Files\Microsoft Shared\SQL Debugging

To register these files, open a command prompt and enter the following commands:

```
regsvr32 sqldbg.dlls
```

```
qldbreg2.exe /RegServer
```

Note: The Remote Procedure Call (RPC) service should be started on both the Toad client and server.

2. Make sure the following permissions are set:
 - Your Windows account that Toad is running under must be a member of the sysadmin server role for the instance you are debugging.
 - Your server login must also be a member of the sysadmin role. This login can be your Windows user account (Windows authentication), or a SQL Server login (SQL Server authentication).

To create a server login from your Windows account and add it to the sysadmin role, a user who already has sysadmin privileges must execute the following:

```
sp_addsrvrolemember 'Domain\Name', 'sysadmin'
```

where *Domain\Name* is your Windows login.

- DCOM Access permissions must be granted for the system account and the group or user who needs access. To verify permissions:
 - a. Open a command prompt and run **dcomcnfg.exe**.
 - b. Expand Component Services, Computers.
 - c. Right-click My Computer and select **Properties**.
 - d. Select the COM Security tab.
 - e. Under Access Permissions, click **Edit Default**, and verify permissions.

Note: By default, Windows administrators on a computer running SQL Server are SQL Server sysadmins on that computer.

3. If autocommit is disabled, commit or rollback the connection in Toad before starting the debugging session.

Set Up Debugging

The Debugger Setup wizard checks your database library and settings files on both the server and client system to identify conflicts with the Debugger.

The wizard verifies the following on the server:

- Existence of the corresponding DLL files
- DLL version (determines whether Toad has permission for their verification)
- COM registration
- DCOM support

The wizard verifies the following on the client:

- Existence of the corresponding DLL files
- DLL version
- COM registration
- Availability of DLLs for this user
- Ability to connect to the server

- Whether this user has administrator privileges for the server
- DCOM support

To run the Debugger Setup wizard

- » Select **Debug | Debugger Setup Wizard** from the menu in an open Editor window.

Appendix: Contact Quest

Contact Quest Support

Quest Support is available to customers who have a trial version of a Quest product or who have purchased a Quest product and have a valid maintenance contract. Quest Support provides unlimited 24x7 access to our Support Portal at www.quest.com/support.

From our Support Portal, you can do the following:

- Retrieve thousands of solutions from our online Knowledge Base
- Download the latest releases and service packs
- Create, update and review Support cases

View the **Global Support Guide** for a detailed explanation of support programs, online services, contact information, policies and procedures. The guide is available at: www.quest.com/support.

Toad Community

Get the latest product information, find helpful resources, and join a discussion with the Toad for SQL Server team and other community members. Join the Toad for SQL Server community at <http://toadforsqlserver.com/index.jspa>.

Contact Quest Software

Email	info@quest.com
	Quest Software, Inc. World Headquarters
Mail	5 Polaris Way Aliso Viejo, CA 92656 USA
Web site	www.quest.com

See our web site for regional and international office information.

About Quest Software

Established in 1987, Quest Software (Nasdaq: QSFT) provides simple and innovative IT management solutions that enable more than 100,000 global customers to save time and

money across physical and virtual environments. Quest products solve complex IT challenges ranging from [database management](#), [data protection](#), [identity and access management](#), [monitoring](#), [user workspace management](#) to [Windows management](#). For more information, visit www.quest.com.

Index

A

application virtualization 8

automation

 upgrade scripts 19

C

Citrix

 install 18

 requirements 8

client requirements 6

connections

 create SQL Azure 28

 create SQL Server 28

 share for all session windows 27

 troubleshoot SQL Server 30

 understand 27

contact support 51

corporate deployment 10

D

debugger

 configure SQL Server 43

 verify installed components 49

desktop virtualization 8

I

install 9

 Citrix 18

 Citrix support 8

 client requirements 6

silent 10

intergration with Management
 Studio 24

L

license keys 25

M

manage objects under Version
 Control 37

mst file 16

R

requirements

 Citrix 8

 client 6

 virtualization 8

S

server virtualization 8

silent install 10

 create transform file 16

 prerequisites 11

SQL Azure

 create connections 28

SQL Server

 configure debugging 43

 create connections 28

 troubleshoot 30

Subversion, configure 35

system requirements 6

T

Team Foundation Server, configure 35

TFS, configure 35

Toad Plug-in 24

transform file 16

troubleshoot

 SQL Server connections 30

 version control 41

U

uninstall 25

V

Version Control

 about 34

 configure Subversion 35

 configure TFS 35

 File system based 35

 manage objects 37

 troubleshoot 41

virtualization support 8